



# Pam Childers

Clerk of the Circuit Court and Comptroller, Escambia County

Clerk of Courts • Count

## MEMORANDUM

**TO:** Honorable Board of County Commissioners  
**DATE:** December 9, 2018  
**SUBJECT:** Tourist Development Tax (TDT) Collections

### RECOMMENDATION:

That the Board accepts, for filing with the Board's Minutes, the Tourist Development Tax (TDT) Collections Data for the November 2018 returns received in the month of December 2018, as prepared by the Finance Department of the Clerk and Comptroller's Office. This is the third month of collections for the fiscal year 2019.

- ✓ Total collected for the month of November 2018 returns was \$569,077.74. This is a 11.50% increase over November 2017 returns.
- ✓ Total collections year to date are 14.10% more than the comparable time frame in Fiscal Year 2018.

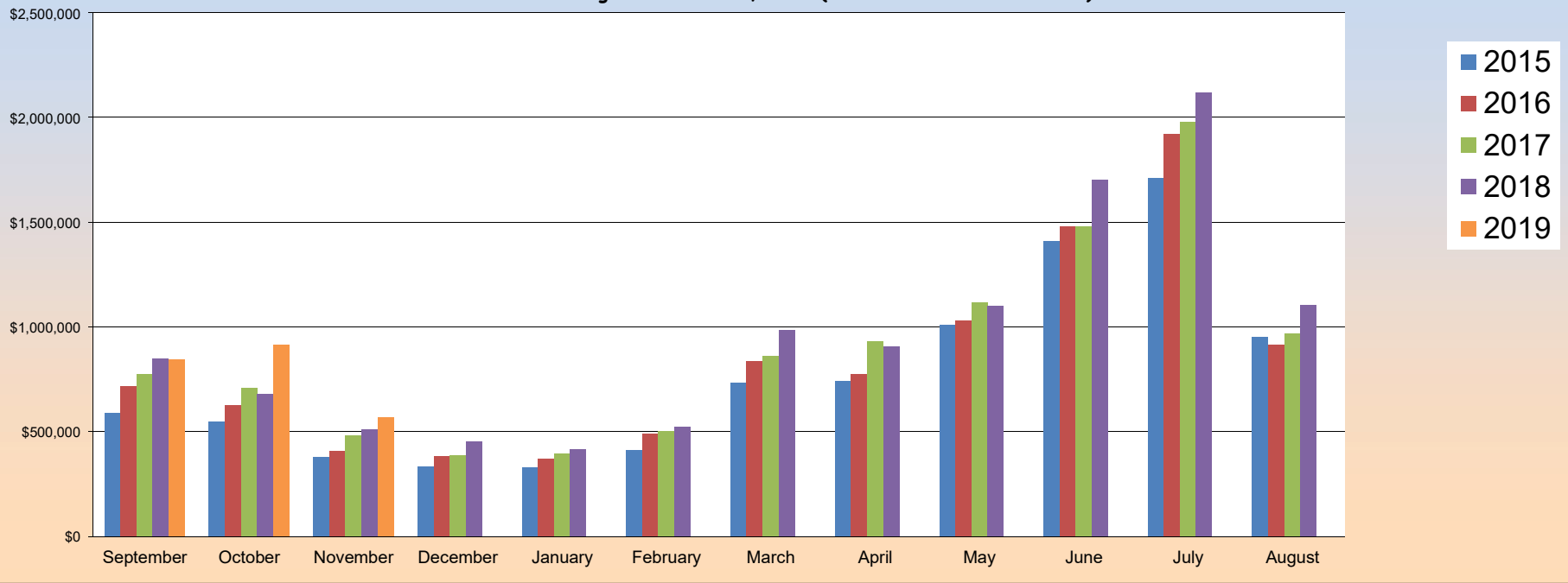
Please feel free to call me if you have any questions.

PC/bhw

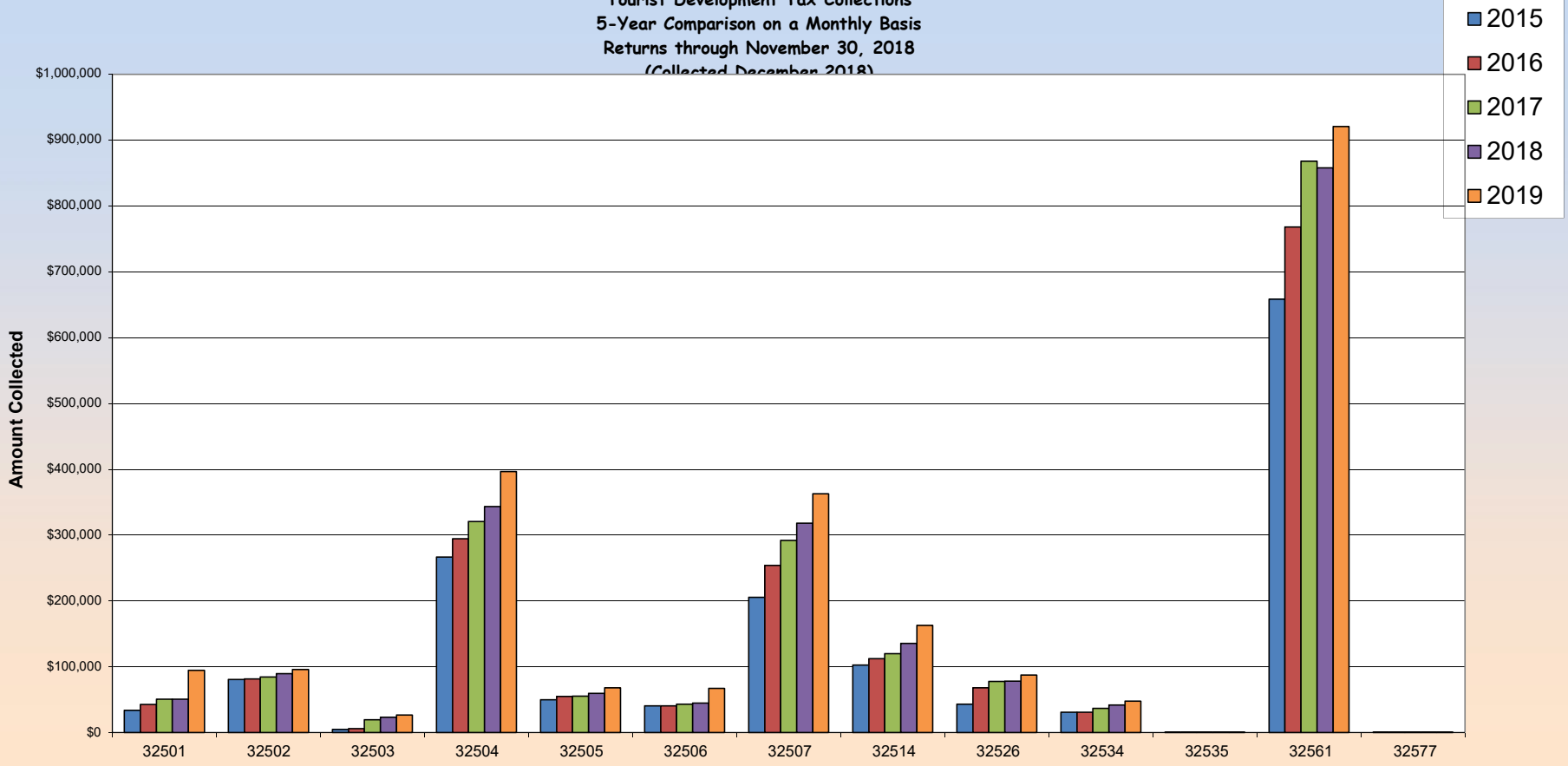
**FOUR PERCENT TOURIST DEVELOPMENT TAX COLLECTION DATA  
 REPORTED IN FISCAL YEAR FORMAT  
 ESCAMBIA COUNTY FLORIDA  
 AS OF December 2018**

Zip Code	Fiscal Year 2019	Fiscal Year 2018	Difference	% Change
	YTD Collected	YTD Collected		
32501	94,434	50,772	43,662	86%
32502	95,844	\$ 89,527	6,317	7%
32503	26,700	23,054	3,646	16%
32504	396,457	343,462	52,995	15%
32505	67,961	59,441	8,520	14%
32506	67,256	44,567	22,689	51%
32507	362,702	318,074	44,628	14%
32514	162,662	135,226	27,436	20%
32526	87,359	78,043	9,316	12%
32534	47,634	41,806	5,828	14%
32535	579	524	55	10%
32561	920,748	857,882	62,866	7%
32562	-	-	-	0%
32577	155	100	55	55%
<b>Total</b>	<b>\$ 2,330,491</b>	<b>\$ 2,042,478</b>	<b>288,013</b>	<b>14%</b>

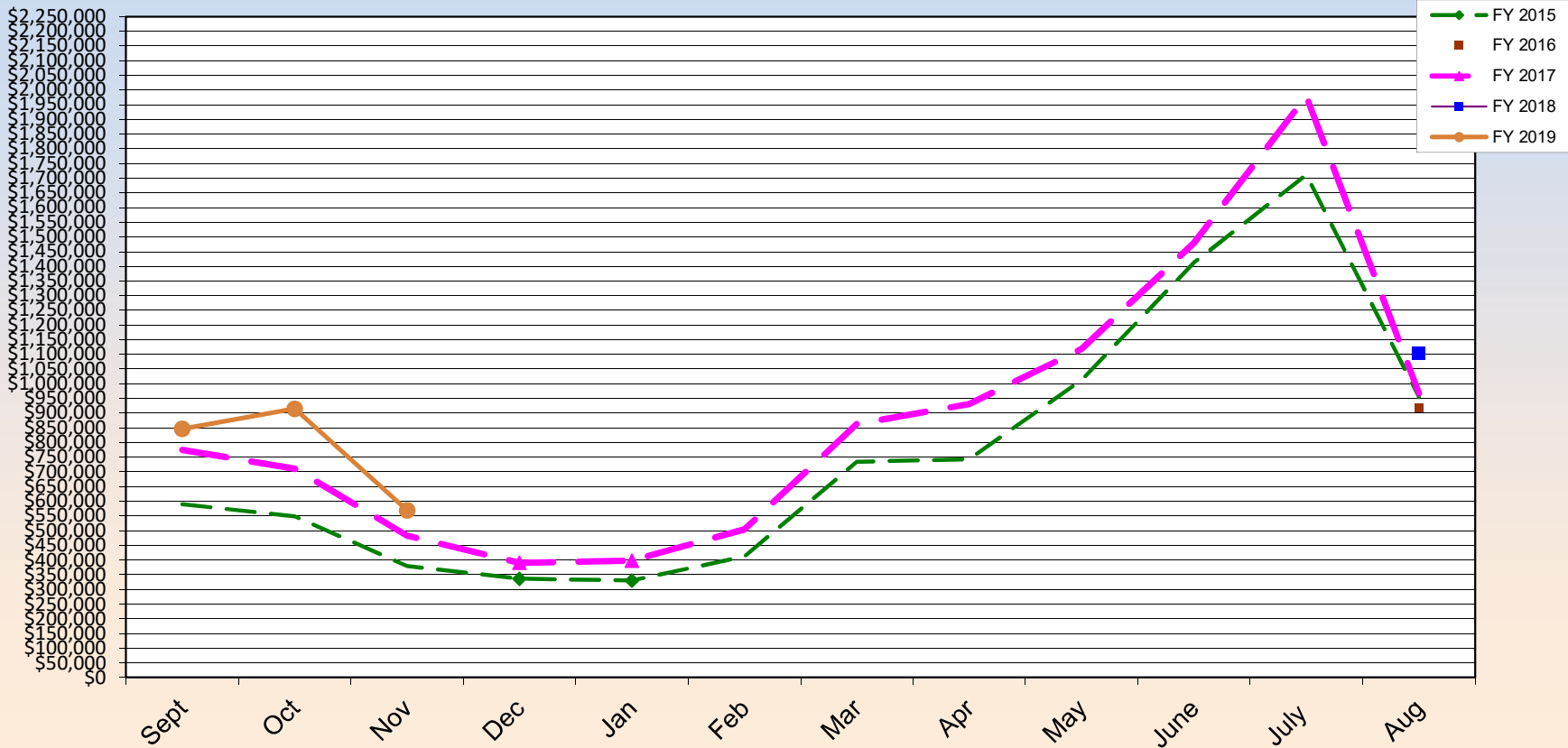
**Tourist Development Tax Collections**  
**5-Year Comparison**  
**Returns through November 30, 2018 (Collected in December 2018)**



**Tourist Development Tax Collections**  
**5-Year Comparison on a Monthly Basis**  
**Returns through November 30, 2018**  
*(Collected December 2018)*



**TOURIST DEVELOPMENT TAX  
5 YEAR TRENDLINE  
FY 2015 - FY 2019**  
Returns through November 30, 2018 (Collected in December 2018)



FOUR PERCENT TOURIST DEVELOPMENT TAX COLLECTION DATA  
 ESCAMBIA COUNTY FLORIDA  
 FISCAL YEAR 2019  
 AS OF December 31, 2018

Month of Collection	Zip Code									
	32501		32502		32503		32504		32505	
	Downtown Area	% OF Total	Other Downtown Area	% OF Total	Cordova Mall & South Area	% OF Total	Davis & Scenic Hwy South of I-10 including Airport Area	% OF Total	South of Michigan Av East of Mobile Hwy West of Pace Blvd	% OF Total
10/18	33,061	4%	29,038	3%	8,340	1%	120,567	14%	17,896	2%
11/18	33,959	4%	40,218	4%	10,154	1%	159,394	17%	32,557	4%
12/18	27,415	5%	26,588	5%	8,206	1%	116,496	20%	17,508	3%
<b>Total</b>	<b>\$ 94,434</b>	<b>4%</b>	<b>\$ 95,844</b>	<b>4%</b>	<b>\$ 26,700</b>	<b>1%</b>	<b>\$ 396,457</b>	<b>17%</b>	<b>\$ 67,961</b>	<b>3%</b>

Month of Collection	Zip Code									
	32506		32507		32514		32526		32534	
	Lillian Hwy & Highway 98 Area	% OF Total	Bayou Chico to Perdido Key South of Sorrento Area	% OF Total	Palafox & Scenic Hwy North of I-10 Area	% OF Total	Mobile Hwy North of Michigan Avenue Area	% OF Total	I-10 & Pensacola Blvd North Area	% OF Total
10/18	23,343	3%	148,106	17%	47,657	6%	24,272	3%	13,922	2%
11/18	27,659	3%	145,682	16%	64,824	7%	34,816	4%	18,767	2%
12/18	16,253	3%	68,914	12%	50,181	9%	28,271	5%	14,944	3%
<b>Total</b>	<b>\$ 67,256</b>	<b>3%</b>	<b>\$ 362,702</b>	<b>16%</b>	<b>\$ 162,662</b>	<b>7%</b>	<b>\$ 87,359</b>	<b>4%</b>	<b>\$ 47,634</b>	<b>2%</b>

Month of Collection	Zip Code								Total Month	% OF Total
	32535		32561		32562		32577			
	Century (Other) Area	% OF Total	Pensacola Beach Area	% OF Total	Other	% OF Total	Molino Area	% OF Total		
10/18	209	0%	380,137	45%	-	0%	92	0%	846,640	100%
11/18	-	0%	346,703	38%	-	0%	40	0%	914,773	100%
12/18	369	0%	193,908	34%	-	0%	23	0%	569,078	100%
<b>Total</b>	<b>\$ 579</b>	<b>0%</b>	<b>\$ 920,748</b>	<b>40%</b>	<b>\$ -</b>	<b>0%</b>	<b>\$ 155</b>	<b>0%</b>	<b>\$ 2,330,491</b>	

FOUR PERCENT TOURIST DEVELOPMENT TAX COLLECTION DATA  
 ESCAMBIA COUNTY FLORIDA  
 FISCAL YEAR 2018  
 AS OF December 31, 2017

Month of Collection	Zip Code									
	32501		32502		32503		32504		32505	
	Downtown Area	% OF Total	Other Downtown Area	% OF Total	Cordova Mall & South Area	% OF Total	Davis & Scenic Hwy South of I-10 including Airport Area	% OF Total	South of Michigan Av East of Mobile Hwy West of Pace Blvd	% OF Total
10/17	20,189	2%	33,110	4%	8,054	1%	127,370	15%	26,827	3%
11/17	15,305	2%	30,151	4%	7,908	1%	112,522	17%	16,690	2%
12/17	15,278	3%	26,266	5%	7,092	1%	103,569	20%	15,923	3%
<b>Total</b>	<b>\$ 50,772</b>	<b>2%</b>	<b>\$ 89,527</b>	<b>4%</b>	<b>\$ 23,054</b>	<b>1%</b>	<b>\$ 343,462</b>	<b>17%</b>	<b>\$ 59,441</b>	<b>3%</b>

Month of Collection	Zip Code									
	32506		32507		32514		32526		32534	
	Lillian Hwy & Highway 98 Area	% OF Total	Bayou Chico to Perdido Key South of Sorrento Area	% OF Total	Palafox & Scenic Hwy North of I-10 Area	% OF Total	Mobile Hwy North of Michigan Avenue Area	% OF Total	I-10 & Pensacola Blvd North Area	% OF Total
10/17	17,729	2%	141,510	17%	48,279	6%	28,141	3%	16,787	2%
11/17	14,116	2%	117,580	17%	45,400	7%	25,079	4%	13,812	2%
12/17	12,723	2%	58,984	12%	41,547	8%	24,823	5%	11,206	2%
<b>Total</b>	<b>\$ 44,567</b>	<b>2%</b>	<b>\$ 318,074</b>	<b>16%</b>	<b>\$ 135,226</b>	<b>7%</b>	<b>\$ 78,043</b>	<b>4%</b>	<b>\$ 41,806</b>	<b>2%</b>

Month of Collection	Zip Code								Total Month	% OF Total
	32535		32561		32562		32577			
	Century (Other) Area	% OF Total	Pensacola Beach Area	% OF Total	Other	% OF Total	Molino Area	% OF Total		
10/17	138	0%	383,626	45%	-	0%	16	0%	851,776	100%
11/17	186	0%	281,499	41%	-	0%	50	0%	680,298	100%
12/17	200	0%	192,757	38%	-	0%	35	0%	510,405	100%
<b>Total</b>	<b>\$ 524</b>	<b>0%</b>	<b>\$ 857,882</b>	<b>42%</b>	<b>\$ -</b>	<b>0%</b>	<b>\$ 100</b>	<b>0%</b>	<b>\$ 2,042,478</b>	

**Tourist Development Tax Collection Data  
Reported in Fiscal Year Format  
Escambia County Florida**

		<b>THREE (3%) PERCENT TOURIST TAX DOLLARS COLLECTED 2010-2019</b>									
Month Of Collection	For The Month Of	2010	2011	2012	2013	2014	2015	2016	2017	2018	2019
OCT	SEP	274,902	321,850	343,637	398,300	385,209	442,268	539,766	580,905	638,832	634,980
NOV	OCT	238,423	276,214	304,579	325,198	335,284	411,054	469,351	532,757	510,223	686,080
DEC	NOV	214,475	226,459	244,845	254,898	236,608	284,253	305,743	362,364	382,803	426,808
<b>TOTAL</b>		<b>\$ 727,800</b>	<b>\$ 824,524</b>	<b>\$ 893,061</b>	<b>\$ 978,396</b>	<b>\$ 957,101</b>	<b>\$ 1,137,575</b>	<b>\$ 1,314,860</b>	<b>\$ 1,476,026</b>	<b>\$ 1,531,858</b>	<b>\$ 1,747,868</b>



TOURIST DEVELOPMENT TAX COLLECTION DATA  
 REPORTED IN FISCAL YEAR FORMAT  
 ESCAMBIA COUNTY, FLORIDA

		<b>ADDITIONAL ONE (1%) PERCENT TOURIST TAX DOLLARS COLLECTED 2010-2019</b>									
Month Of Collection	For The Month Of	2010	2011	2012	2013	2014	2015	2016	2017	2018	2,019
OCT	SEP	91,634	107,283	114,546	132,767	128,403	147,425	179,922	193,635	212,944	211,661
NOV	OCT	79,474	92,072	101,526	108,399	111,761	137,018	156,450	177,586	170,074	228,693
DEC	NOV	71,492	75,487	81,615	84,966	78,869	94,751	101,914	120,788	127,601	142,269
<b>TOTAL</b>		<b>\$242,600</b>	<b>\$274,841</b>	<b>\$297,687</b>	<b>\$326,132</b>	<b>\$319,034</b>	<b>\$379,194</b>	<b>\$438,287</b>	<b>\$492,009</b>	<b>\$510,620</b>	<b>\$582,623</b>