



# Pam Childers

Clerk of the Circuit Court and Comptroller, Escambia County

Clerk of Courts • County Comptroller • Clerk of the Board of County Commissioners • Recorder • Auditor

## MEMORANDUM

**TO:** Honorable Board of County Commissioners  
**DATE:** July 10, 2017  
**SUBJECT:** Tourist Development Tax (TDT) Collections

### RECOMMENDATION:

That the Board accepts, for filing with the Board's Minutes, the Tourist Development Tax (TDT) Collections Data for the May 2017 returns received in the month of June 2017, as prepared by the Finance Department of the Clerk and Comptroller's Office. This is the ninth month of collections for the fiscal year 2017.

- ✓ Total collected for the month of May 2017 returns was \$1,118,524.29. This is a 8.70% increase over the May 2016 returns.
- ✓ Total collections year to date are 9.49% more than the comparable time frame in Fiscal Year 2016.

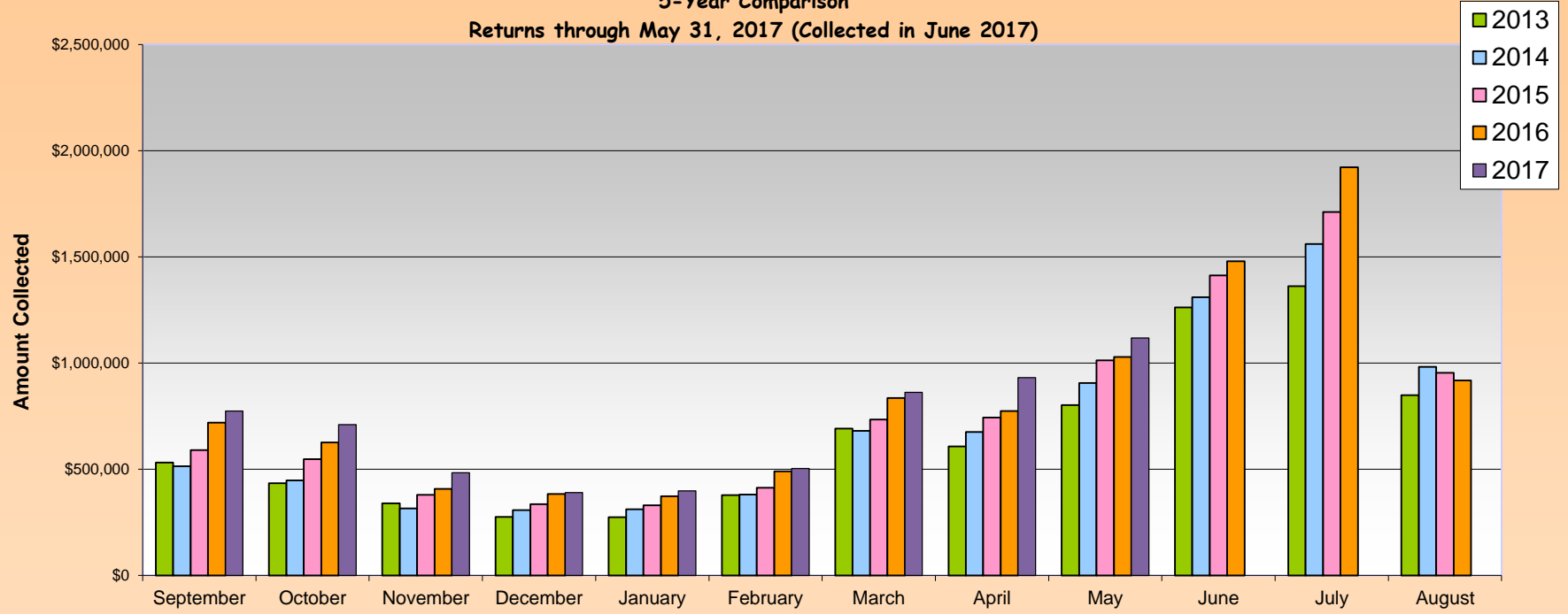
Please feel free to call me if you have any questions.

PC/bhw

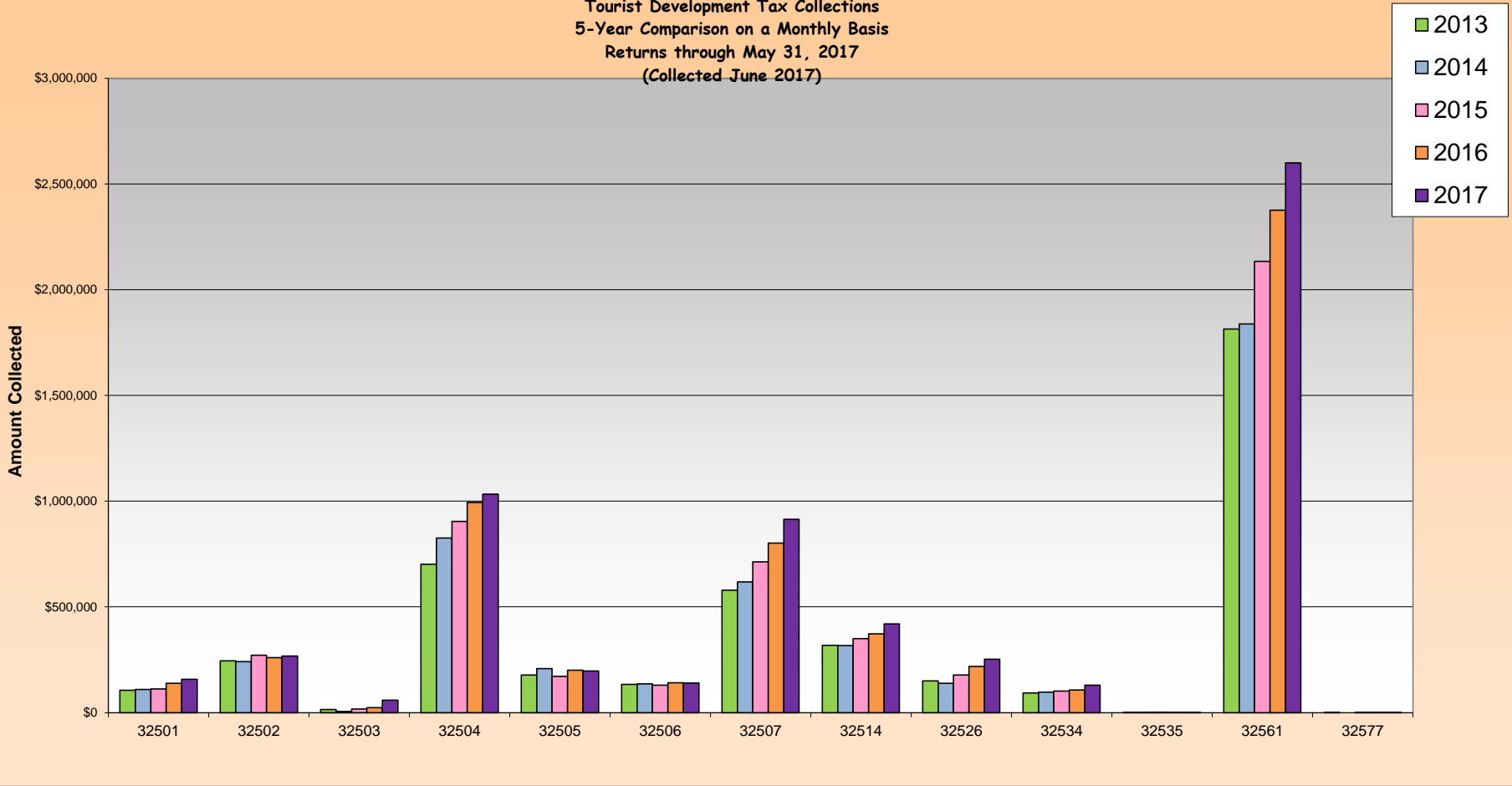
**FOUR PERCENT TOURIST DEVELOPMENT TAX COLLECTION DATA  
 REPORTED IN FISCAL YEAR FORMAT  
 ESCAMBIA COUNTY FLORIDA  
 AS JUNE 2017**

Zip Code	Fiscal Year 2017	Fiscal Year 2016	Difference	% Change
	YTD Collected	YTD Collected		
32501	157,817	138,587	19,230	14%
32502	268,286	260,602	7,684	3%
32503	59,618	23,699	35,919	152%
32504	1,032,705	994,023	38,682	4%
32505	196,780	200,762	(3,982)	-2%
32506	139,426	141,864	(2,438)	-2%
32507	914,347	802,108	112,239	14%
32514	420,124	372,908	47,216	13%
32526	252,480	218,266	34,214	16%
32534	129,827	107,566	22,261	21%
32535	1,334	1,206	128	11%
32561	2,599,671	2,375,759	223,912	9%
32562	-	-	-	0%
32577	168	50	50	100%
<b>Total</b>	<b>\$ 6,172,583</b>	<b>\$ 5,637,400</b>	<b>535,115</b>	<b>9%</b>

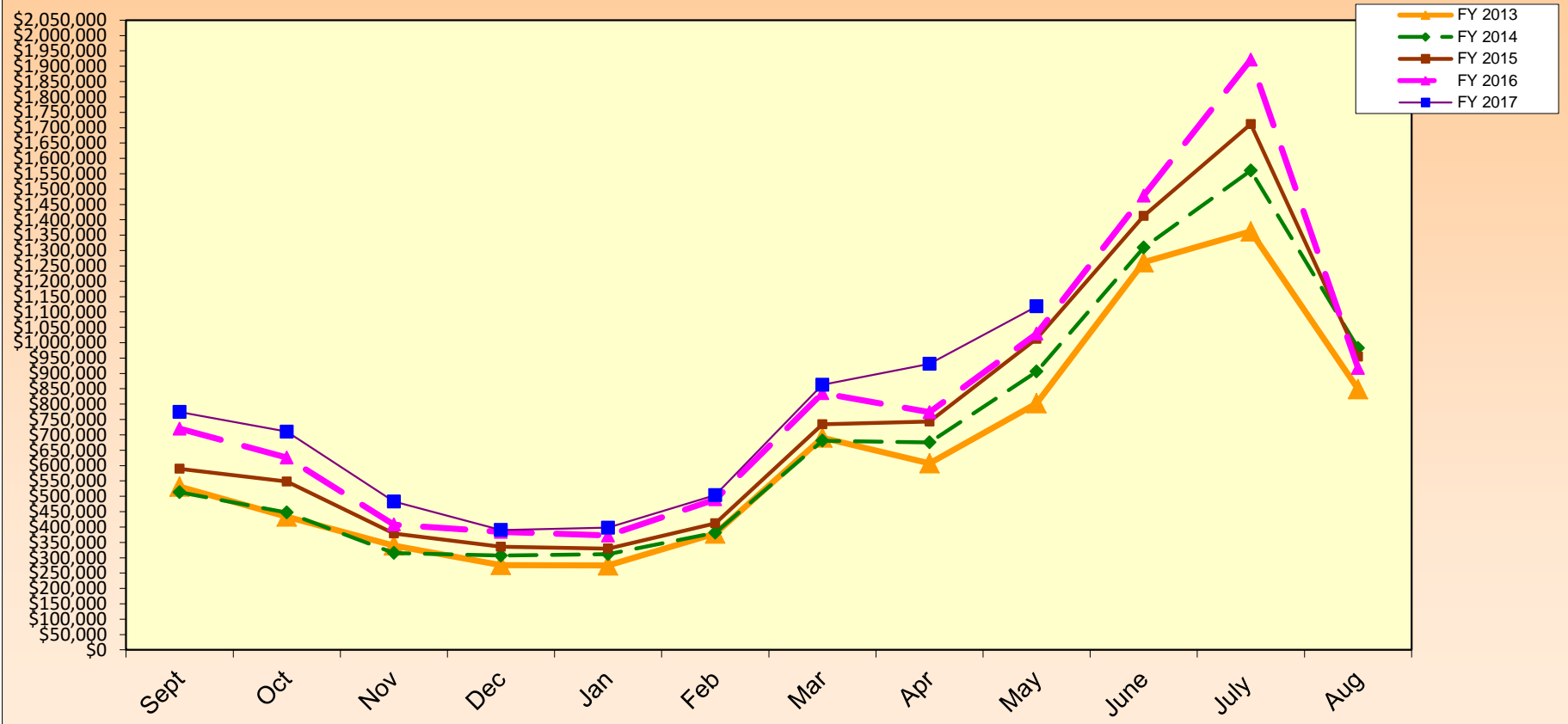
**Tourist Development Tax Collections**  
**5-Year Comparison**  
**Returns through May 31, 2017 (Collected in June 2017)**



Tourist Development Tax Collections  
 5-Year Comparison on a Monthly Basis  
 Returns through May 31, 2017  
 (Collected June 2017)



**TOURIST DEVELOPMENT TAX  
5 YEAR TRENDLINE  
FY 2013 - FY 2017  
Returns through May 31, 2017 (Collected in June 2017)**



**FOUR PERCENT TOURIST DEVELOPMENT TAX COLLECTION DATA**  
**ESCAMBIA COUNTY FLORIDA**  
**FISCAL YEAR 2017**  
**AS OF JUNE 30, 2017**

Month of Collection	Zip Code									
	32501		32502		32503		32504		32505	
	Downtown Area	% OF Total	Other Downtown Area	% OF Total	Cordova Mall & South Area	% OF Total	Davis & Scenic Hwy South of I-10 including Airport Area	% OF Total	South of Michigan Av East of Mobile Hwy West of Pace Blvd	% OF Total
10/16	19,380	3%	28,706	4%	7,582	1%	107,704	14%	18,717	2%
11/16	16,302	2%	29,923	4%	6,327	1%	113,135	16%	19,922	3%
12/16	14,867	3%	25,670	5%	5,411	1%	99,858	21%	16,651	3%
01/17	12,246	3%	20,593	5%	4,367	1%	80,988	21%	15,052	4%
02/17	12,855	3%	20,184	5%	4,061	1%	88,341	22%	16,726	4%
03/17	16,219	3%	26,153	5%	5,274	1%	95,993	19%	19,123	4%
04/17	20,894	2%	35,754	4%	8,948	1%	145,212	17%	31,829	4%
05/17	20,380	2%	38,255	4%	7,697	1%	141,063	15%	27,182	3%
06/17	24,674	2%	43,047	4%	9,951	1%	160,413	14%	31,577	3%
<b>Total</b>	<b>\$ 157,817</b>	<b>3%</b>	<b>\$ 268,286</b>	<b>4%</b>	<b>\$ 59,618</b>	<b>1%</b>	<b>\$ 1,032,705</b>	<b>17%</b>	<b>\$ 196,780</b>	<b>3%</b>

Month of Collection	Zip Code									
	32506		32507		32514		32526		32534	
	Lillian Hwy & Highway 98 Area	% OF Total	Bayou Chico to Perdido Key South of Sorrento Area	% OF Total	Palafox & Scenic Hwy North of I-10 Area	% OF Total	Mobile Hwy North of Michigan Avenue Area	% OF Total	I-10 & Pensacola Blvd North Area	% OF Total
10/16	14,090	2%	127,015	16%	40,875	5%	26,793	3%	11,880	2%
11/16	17,582	2%	111,916	16%	39,350	6%	26,474	4%	12,889	2%
12/16	11,410	2%	53,080	11%	39,610	8%	24,256	5%	11,841	2%
01/17	8,637	2%	40,510	10%	35,625	9%	23,062	6%	11,310	3%
02/17	12,085	3%	52,690	13%	37,083	9%	23,259	6%	12,137	3%
03/17	13,158	3%	70,759	14%	40,304	8%	30,673	6%	13,739	3%
04/17	21,455	2%	129,291	15%	62,062	7%	31,662	4%	19,449	2%
05/17	19,189	2%	143,419	15%	57,860	6%	31,242	3%	17,208	2%
06/17	21,821	2%	185,667	17%	67,355	6%	35,058	3%	19,374	2%
<b>Total</b>	<b>\$ 139,426</b>	<b>2%</b>	<b>\$ 914,347</b>	<b>15%</b>	<b>\$ 420,124</b>	<b>7%</b>	<b>\$ 252,480</b>	<b>4%</b>	<b>\$ 129,827</b>	<b>2%</b>

Month of Collection	Zip Code								Total Month	% OF Total
	32535		32561		32562		32577			
	Century (Other) Area	% OF Total	Pensacola Beach Area	% OF Total	Other	% OF Total	Molino Area	% OF Total		
10/16	105	0%	371,593	48%	-	0%	100	0%	774,539	100%
11/16	229	0%	316,293	45%	-	0%	-	0%	710,344	100%
12/16	135	0%	180,363	37%	-	0%	-	0%	483,152	100%
01/17	75	0%	137,912	35%	-	0%	-	0%	390,377	100%
02/17	135	0%	118,318	30%	-	0%	-	0%	397,875	100%
03/17	126	0%	172,429	34%	-	0%	-	0%	503,949	100%
04/17	191	0%	355,829	41%	-	0%	68	0%	862,643	100%
05/17	191	0%	427,495	46%	-	0%	-	0%	931,179	100%
06/17	148	0%	519,438	46%	-	0%	-	0%	1,118,524	100%
<b>Total</b>	<b>\$ 1,334</b>	<b>0%</b>	<b>\$ 2,599,671</b>	<b>42%</b>	<b>\$ -</b>	<b>0%</b>	<b>\$ 168</b>	<b>0%</b>	<b>\$ 6,172,583</b>	<b>100%</b>

**FOUR PERCENT TOURIST DEVELOPMENT TAX COLLECTION DATA**  
**ESCAMBIA COUNTY FLORIDA**  
**FISCAL YEAR 2016**  
**AS OF JUNE 30, 2016**

Month of Collection	Zip Code									
	32501		32502		32503		32504		32505	
	Downtown Area	% OF Total	Other Downtown Area	% OF Total	Cordova Mall & South Area	% OF Total	Davis & Scenic Hwy South of I-10 including Airport Area	% OF Total	South of Michigan Av East of Mobile Hwy West of Pace Blvd	% OF Total
10/15	13,893	2%	28,092	4%	1,583	0%	103,155	14%	23,955	3%
11/15	16,283	3%	31,883	5%	2,371	0%	102,729	16%	17,936	3%
12/15	12,524	3%	21,272	5%	1,996	0%	88,735	22%	12,756	3%
01/16	13,573	4%	20,368	5%	610	0%	83,364	22%	17,085	4%
02/16	13,032	4%	23,607	6%	1,025	0%	84,142	23%	14,337	4%
03/16	13,400	3%	27,976	6%	1,807	0%	101,374	21%	28,180	6%
04/16	17,642	2%	36,335	4%	4,316	1%	136,994	16%	30,208	4%
05/16	17,514	2%	38,337	5%	3,718	0%	135,394	18%	26,196	3%
06/16	20,726	2%	32,731	3%	6,274	1%	158,136	15%	30,108	3%
					3					
<b>Total</b>	<b>\$ 138,587</b>	<b>2%</b>	<b>\$ 260,602</b>	<b>5%</b>	<b>\$ 23,699</b>	<b>0%</b>	<b>\$ 994,023</b>	<b>18%</b>	<b>\$ 200,762</b>	<b>4%</b>

Month of Collection	Zip Code									
	32506		32507		32514		32526		32534	
	Lillian Hwy & Highway 98 Area	% OF Total	Bayou Chico to Perdido Key South of Sorrento Area	% OF Total	Palafox & Scenic Hwy North of I-10 Area	% OF Total	Mobile Hwy North of Michigan Avenue Area	% OF Total	I-10 & Pensacola Blvd North Area	% OF Total
10/15	14,443	2%	118,367	16%	39,504	5%	22,562	3%	9,820	1%
11/15	13,073	2%	93,637	15%	38,661	6%	24,476	4%	11,627	2%
12/15	12,924	3%	41,978	10%	33,838	8%	21,065	5%	9,397	2%
01/16	10,738	3%	36,999	10%	34,083	9%	22,108	6%	9,416	2%
02/16	12,462	3%	46,390	12%	35,263	9%	19,997	5%	9,137	2%
03/16	15,117	3%	61,478	13%	38,016	8%	21,107	4%	12,049	2%
04/16	21,604	3%	125,695	15%	49,429	6%	27,812	3%	13,771	2%
05/16	19,370	3%	109,122	14%	49,965	6%	27,574	4%	15,294	2%
06/16	22,134	2%	168,441	16%	54,150	5%	31,565	3%	17,056	2%
<b>Total</b>	<b>\$ 141,864</b>	<b>3%</b>	<b>\$ 802,108</b>	<b>14%</b>	<b>\$ 372,908</b>	<b>7%</b>	<b>\$ 218,266</b>	<b>4%</b>	<b>\$ 107,566</b>	<b>2%</b>

Month of Collection	Zip Code								Total Month	% OF Total
	32535		32561		32562		32577			
	Century (Other) Area	% OF Total	Pensacola Beach Area	% OF Total	Other	% OF Total	Molino Area	% OF Total		
10/15	114	0%	344,156	48%	-	0%	50	0%	719,689	100%
11/15	-	0%	273,123	44%	-	0%	-	0%	625,801	100%
12/15	310	0%	150,864	37%	-	0%	-	0%	407,658	100%
01/16	83	0%	135,746	35%	-	0%	-	0%	384,174	100%
02/16	120	0%	112,686	30%	-	0%	-	0%	372,197	100%
03/16	124	0%	169,342	35%	-	0%	-	0%	489,969	100%
04/16	118	0%	371,503	44%	-	0%	-	0%	835,430	100%
05/16	122	0%	330,868	43%	-	0%	-	0%	773,474	100%
06/16	215	0%	487,471	47%	-	0%	-	0%	1,029,008	100%
<b>Total</b>	<b>\$ 1,206</b>	<b>0%</b>	<b>\$ 2,375,759</b>	<b>42%</b>	<b>\$ -</b>	<b>0%</b>	<b>\$ 50</b>	<b>0%</b>	<b>\$ 5,637,400</b>	<b>100%</b>

**Tourist Development Tax Collection Data  
Reported in Fiscal Year Format  
Escambia County Florida**

		<b>THREE (3%) PERCENT TOURIST TAX DOLLARS COLLECTED 2008-2017</b>									
Month Of Collection	For The Month Of	2008	2009	2010	2011	2012	2013	2014	2015	2016	2017
OCT	SEP	288,077.12	277,444.48	274,901.92	321,849.74	343,636.53	398,299.57	385,209.00	442,267.77	539,766.08	580,905.23
NOV	OCT	238,591.23	231,361.46	238,423.02	276,214.34	304,579.36	325,198.14	335,284.00	411,054.07	469,350.97	532,756.66
DEC	NOV	206,204.57	185,366.89	214,475.17	226,459.48	244,845.21	254,898.32	236,608.15	284,252.75	305,743.24	362,364.41
JAN	DEC	163,664.77	169,733.91	164,750.48	192,545.53	212,163.82	207,117.28	230,299.67	251,855.56	288,130.47	292,783.04
FEB	JAN	180,693.75	176,772.70	171,884.59	192,262.06	200,842.72	205,954.29	233,878.78	247,492.44	279,147.70	298,406.00
MAR	FEB	227,362.27	215,130.92	201,472.82	241,571.39	270,226.16	283,811.81	286,019.12	309,203.54	367,477.35	377,962.06
APR	MAR	344,150.56	297,194.88	330,260.96	397,689.68	464,001.68	518,241.62	510,758.43	550,692.54	626,572.22	646,982.44
MAY	APR	303,719.78	338,267.98	358,870.82	417,733.12	447,350.01	455,553.85	506,593.46	557,617.44	580,106.01	698,384.24
JUN	MAY	474,863.17	387,512.78	417,285.43	510,038.46	542,048.23	601,926.69	679,427.99	759,527.89	771,755.66	838,893.22
<b>TOTAL</b>		<b>\$2,427,327</b>	<b>\$2,278,786</b>	<b>\$2,372,325</b>	<b>\$2,776,364</b>	<b>\$3,029,694</b>	<b>\$3,251,002</b>	<b>\$3,404,079</b>	<b>\$3,813,964</b>	<b>\$4,228,050</b>	<b>\$4,629,437</b>



TOURIST DEVELOPMENT TAX COLLECTION DATA  
 REPORTED IN FISCAL YEAR FORMAT  
 ESCAMBIA COUNTY, FLORIDA

<b>ADDITIONAL ONE (1%) PERCENT TOURIST TAX DOLLARS COLLECTED 2008-2017</b>											
Month Of Collection	For The Month Of	2008	2009	2010	2011	2012	2013	2014	2015	2016	2017
OCT	SEP	96,025.71	92,481.50	91,633.97	107,283.24	114,545.51	132,766.53	128,403.12	147,425.00	179,922.03	193,635.08
NOV	OCT	79,530.41	77,120.49	79,474.34	92,071.54	101,526.46	108,399.38	111,761.00	137,018.02	156,450.33	177,585.55
DEC	NOV	68,734.86	61,788.96	71,491.73	75,486.53	81,615.07	84,966.11	78,869.39	94,750.92	101,914.42	120,788.14
JAN	DEC	54,554.92	56,577.97	54,916.82	64,181.84	70,721.28	69,039.09	76,766.56	83,949.85	96,043.49	97,594.35
FEB	JAN	60,231.25	58,924.24	57,294.86	64,087.36	66,947.57	68,651.43	77,959.60	82,497.48	93,049.24	99,468.67
MAR	FEB	75,787.42	71,710.31	67,157.61	80,523.80	90,075.39	94,603.94	95,339.71	103,067.65	122,492.45	125,987.35
APR	MAR	114,716.85	99,064.96	110,086.99	132,563.23	154,667.23	172,747.21	170,252.81	183,564.18	208,857.41	215,660.81
MAY	APR	101,239.93	112,755.99	119,623.61	139,244.37	149,116.67	151,851.29	168,864.49	185,872.28	193,368.67	232,794.75
JUN	MAY	158,287.73	129,170.92	139,095.14	170,012.82	180,682.75	200,642.23	226,476.00	253,175.96	257,251.89	279,631.07
<b>TOTAL</b>		<b>\$809,109</b>	<b>\$759,595</b>	<b>\$790,775</b>	<b>\$925,455</b>	<b>\$1,009,898</b>	<b>\$1,083,667</b>	<b>\$1,134,693</b>	<b>\$1,271,321</b>	<b>\$1,409,350</b>	<b>\$1,543,146</b>