



# Pam Childers

Clerk of the Circuit Court and Comptroller, Escambia County

Clerk of Courts • County Comptroller • Clerk of the Board of County Commissioners • Recorder • Auditor

## MEMORANDUM

**TO:** Honorable Board of County Commissioners

**DATE:** October 6, 2017

**SUBJECT:** Tourist Development Tax (TDT) Collections

### RECOMMENDATION:

That the Board accepts, for filing with the Board's Minutes, the Tourist Development Tax (TDT) Collections Data for the August 2017 returns received in the month of September 2017, as prepared by the Finance Department of the Clerk and Comptroller's Office. This is the eleventh month of collections for the fiscal year 2017.

- ✓ Total collected for the month of August 2017 returns was \$967,487.93. This is a 5.45% increase over the August 2016 returns.
- ✓ Total collections year to date are 6.47% more than the comparable time frame in Fiscal Year 2016.

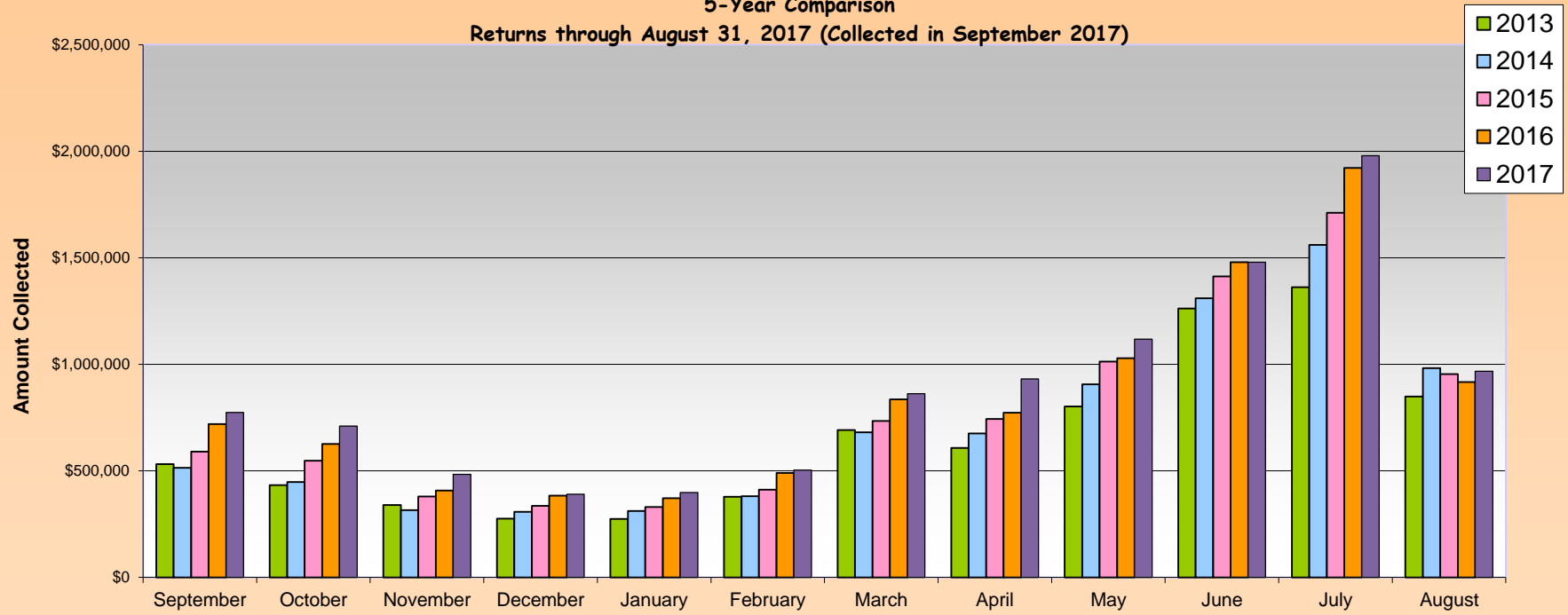
Please feel free to call me if you have any questions.

PC/bhw

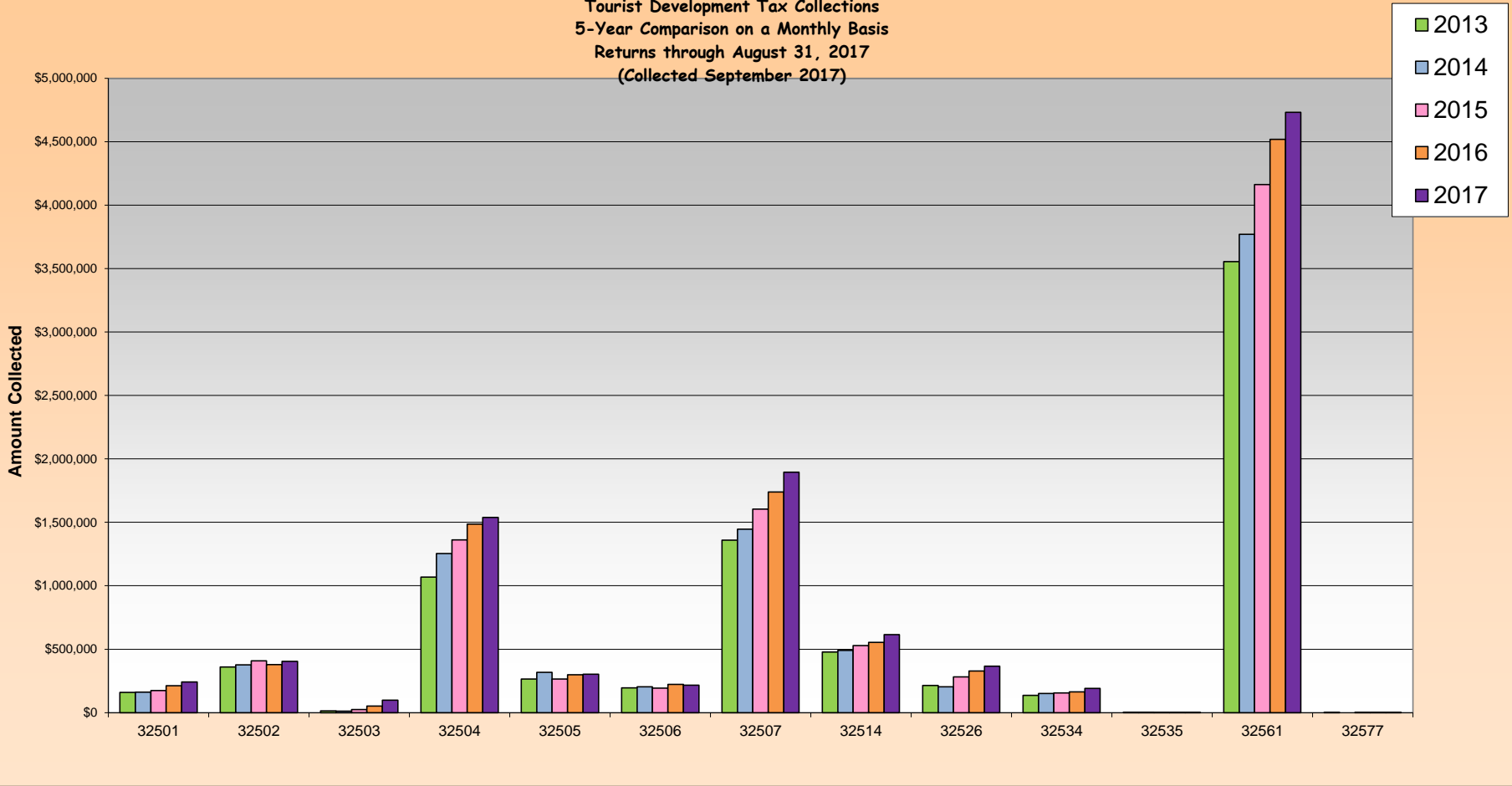
**FOUR PERCENT TOURIST DEVELOPMENT TAX COLLECTION DATA  
 REPORTED IN FISCAL YEAR FORMAT  
 ESCAMBIA COUNTY FLORIDA  
 AS SEPTEMBER 2017**

Zip Code	Fiscal Year 2017	Fiscal Year 2016	Difference	% Change
	YTD Collected	YTD Collected		
32501	241,132	212,078	29,054	14%
32502	403,223	379,743	23,480	6%
32503	97,566	52,041	45,525	87%
32504	1,539,061	1,485,581	53,480	4%
32505	302,006	299,305	2,701	1%
32506	216,949	222,420	(5,471)	-2%
32507	1,895,745	1,738,784	156,961	9%
32514	614,671	554,358	60,313	11%
32526	365,774	327,823	37,951	12%
32534	190,960	163,303	27,657	17%
32535	1,714	1,673	41	2%
32561	4,730,210	4,517,745	212,465	5%
32562	-	-	-	0%
32577	168	50	50	100%
<b>Total</b>	<b>\$ 10,599,179</b>	<b>\$ 9,954,904</b>	<b>644,207</b>	<b>6%</b>

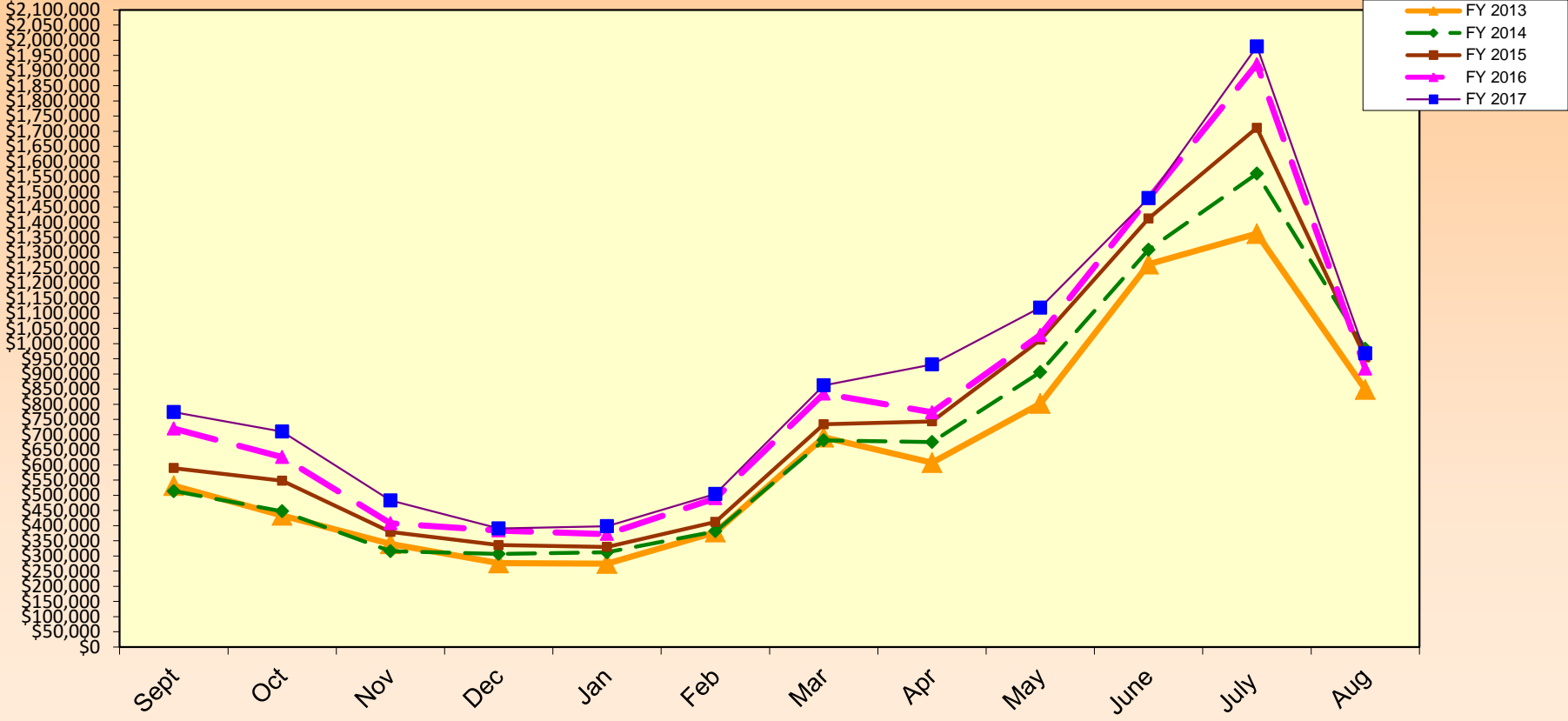
**Tourist Development Tax Collections**  
**5-Year Comparison**  
**Returns through August 31, 2017 (Collected in September 2017)**



Tourist Development Tax Collections  
 5-Year Comparison on a Monthly Basis  
 Returns through August 31, 2017  
 (Collected September 2017)



**TOURIST DEVELOPMENT TAX  
5 YEAR TRENDLINE  
FY 2013 - FY 2017**  
Returns through August 31, 2017 (Collected in September 2017)



**FOUR PERCENT TOURIST DEVELOPMENT TAX COLLECTION DATA**  
**ESCAMBIA COUNTY FLORIDA**  
**FISCAL YEAR 2017**  
**AS OF SEPTEMBER 30, 2017**

Month of Collection	Zip Code									
	32501		32502		32503		32504		32505	
	Downtown Area	% OF Total	Other Downtown Area	% OF Total	Cordova Mall & South Area	% OF Total	Davis & Scenic Hwy South of I-10 including Airport Area	% OF Total	South of Michigan Av East of Mobile Hwy West of Pace Blvd	% OF Total
10/16	19,380	3%	28,706	4%	7,582	1%	107,704	14%	18,717	2%
11/16	16,302	2%	29,923	4%	6,327	1%	113,135	16%	19,922	3%
12/16	14,867	3%	25,670	5%	5,411	1%	99,858	21%	16,651	3%
01/17	12,246	3%	20,594	5%	4,367	1%	80,988	21%	15,052	4%
02/17	12,855	3%	20,184	5%	4,061	1%	88,341	22%	16,726	4%
03/17	16,219	3%	26,153	5%	5,274	1%	95,993	19%	19,123	4%
04/17	20,894	2%	35,754	4%	8,948	1%	145,212	17%	31,829	4%
05/17	20,380	2%	38,255	4%	7,697	1%	141,063	15%	27,182	3%
06/17	24,674	2%	43,047	4%	9,951	1%	160,413	14%	31,577	3%
07/17	26,982	2%	44,728	3%	12,068	1%	167,378	11%	36,214	2%
08/17	35,881	2%	57,956	3%	15,598	1%	204,620	10%	46,920	2%
09/17	20,452	2%	32,253	3%	10,281	1%	134,358	14%	22,092	2%
<b>Total</b>	<b>\$ 241,132</b>	<b>2%</b>	<b>\$ 403,223</b>	<b>4%</b>	<b>\$ 97,566</b>	<b>1%</b>	<b>\$ 1,539,061</b>	<b>15%</b>	<b>\$ 302,006</b>	<b>3%</b>

Month of Collection	Zip Code									
	32506		32507		32514		32526		32534	
	Lillian Hwy & Highway 98 Area	% OF Total	Bayou Chico to Perdido Key South of Sorrento Area	% OF Total	Palafox & Scenic Hwy North of I-10 Area	% OF Total	Mobile Hwy North of Michigan Avenue Area	% OF Total	I-10 & Pensacola Blvd North Area	% OF Total
10/16	14,090	2%	127,015	16%	40,875	5%	26,793	3%	11,880	2%
11/16	17,582	2%	111,916	16%	39,350	6%	26,474	4%	12,889	2%
12/16	11,410	2%	53,079	11%	39,610	8%	24,256	5%	11,841	2%
01/17	8,637	2%	40,512	10%	35,625	9%	23,062	6%	11,310	3%
02/17	12,085	3%	52,690	13%	37,083	9%	23,259	6%	12,137	3%
03/17	13,158	3%	70,759	14%	40,304	8%	30,673	6%	13,739	3%
04/17	21,455	2%	129,291	15%	62,062	7%	31,662	4%	19,449	2%
05/17	19,189	2%	143,419	15%	57,860	6%	31,242	3%	17,208	2%
06/17	21,821	2%	185,667	17%	67,355	6%	35,058	3%	19,374	2%
07/17	26,518	2%	356,906	24%	69,676	5%	37,343	3%	20,365	1%
08/17	36,222	2%	445,116	22%	75,121	4%	46,114	2%	25,840	1%
09/17	14,784	2%	179,374	19%	49,749	5%	29,837	3%	14,928	2%
<b>Total</b>	<b>\$ 216,949</b>	<b>2%</b>	<b>\$ 1,895,745</b>	<b>18%</b>	<b>\$ 614,671</b>	<b>6%</b>	<b>\$ 365,774</b>	<b>\$ -</b>	<b>\$ 190,960</b>	<b>2%</b>

Month of Collection	Zip Code								Total Month	% OF Total
	32535		32561		32562		32577			
	Century (Other) Area	% OF Total	Pensacola Beach Area	% OF Total	Other	% OF Total	Molino Area	% OF Total		
10/16	105	0%	371,593	48%	-	0%	100	0%	774,538	100%
11/16	229	0%	316,293	45%	-	0%	-	0%	710,343	100%
12/16	135	0%	180,363	37%	-	0%	-	0%	483,151	100%
01/17	75	0%	137,912	35%	-	0%	-	0%	390,380	100%
02/17	135	0%	118,318	30%	-	0%	-	0%	397,875	100%
03/17	126	0%	172,429	34%	-	0%	-	0%	503,949	100%
04/17	191	0%	355,829	41%	-	0%	68	0%	862,643	100%
05/17	191	0%	427,495	46%	-	0%	-	0%	931,179	100%
06/17	148	0%	519,609	46%	-	0%	-	0%	1,118,695	100%
07/17	136	0%	681,271	46%	-	0%	-	0%	1,479,585	100%
08/17	154	0%	989,810	50%	-	0%	-	0%	1,979,352	100%
09/17	90	0%	459,288	47%	-	0%	-	0%	967,488	100%
<b>Total</b>	<b>\$ 1,714</b>	<b>0%</b>	<b>\$ 4,730,210</b>	<b>45%</b>	<b>\$ -</b>	<b>0%</b>	<b>\$ 168</b>	<b>0%</b>	<b>\$ 10,599,179</b>	<b>100%</b>

**FOUR PERCENT TOURIST DEVELOPMENT TAX COLLECTION DATA  
 ESCAMBIA COUNTY FLORIDA  
 FISCAL YEAR 2016  
 AS OF SEPTEMBER 30, 2016**

Month of Collection	Zip Code									
	32501		32502		32503		32504		32505	
	Downtown Area	% OF Total	Other Downtown Area	% OF Total	Cordova Mall & South Area	% OF Total	Davis & Scenic Hwy South of I-10 including Airport Area	% OF Total	South of Michigan Av East of Mobile Hwy West of Pace Blvd	% OF Total
10/15	13,893	2%	28,092	4%	1,583	0%	103,155	14%	23,955	3%
11/15	16,283	3%	31,883	5%	2,371	0%	102,729	16%	17,936	3%
12/15	12,524	3%	21,272	5%	1,996	0%	88,735	22%	12,756	3%
01/16	13,573	4%	20,368	5%	610	0%	83,364	22%	17,085	4%
02/16	13,032	4%	23,607	6%	1,025	0%	84,142	23%	14,337	4%
03/16	13,400	3%	27,976	6%	1,807	0%	101,374	21%	28,180	6%
04/16	17,642	2%	36,335	4%	4,316	1%	136,994	16%	30,208	4%
05/16	17,514	2%	38,337	5%	3,718	0%	135,394	18%	26,196	3%
06/16	20,726	2%	32,731	3%	6,274	1%	158,136	15%	30,108	3%
07/16	24,497	2%	39,917	3%	8,313	1%	167,345	11%	31,515	2%
08/16	29,781	2%	49,433	3%	12,070	1%	202,675	11%	46,645	2%
09/16	19,212	2%	29,791	3%	7,959	1%	121,539	13%	20,383	2%
<b>Total</b>	<b>\$ 212,078</b>	<b>2%</b>	<b>\$ 379,743</b>	<b>4%</b>	<b>\$ 52,041</b>	<b>1%</b>	<b>\$ 1,485,581</b>	<b>15%</b>	<b>\$ 299,305</b>	<b>3%</b>

Month of Collection	Zip Code									
	32506		32507		32514		32526		32534	
	Lillian Hwy & Highway 98 Area	% OF Total	Bayou Chico to Perdido Key South of Sorrento Area	% OF Total	Palafox & Scenic Hwy North of I-10 Area	% OF Total	Mobile Hwy North of Michigan Avenue Area	% OF Total	I-10 & Pensacola Blvd North Area	% OF Total
10/15	14,443	2%	118,367	16%	39,504	5%	22,562	3%	9,820	1%
11/15	13,073	2%	93,637	15%	38,661	6%	24,476	4%	11,627	2%
12/15	12,924	3%	41,978	10%	33,838	8%	21,065	5%	9,397	2%
01/16	10,738	3%	36,999	10%	34,083	9%	22,108	6%	9,416	2%
02/16	12,462	3%	46,390	12%	35,263	9%	19,997	5%	9,137	2%
03/16	15,117	3%	61,478	13%	38,016	8%	21,107	4%	12,049	2%
04/16	21,604	3%	125,695	15%	49,429	6%	27,812	3%	13,771	2%
05/16	19,370	3%	109,122	14%	49,965	6%	27,574	4%	15,294	2%
06/16	22,134	2%	168,441	16%	54,150	5%	31,565	3%	17,056	2%
07/16	28,784	2%	337,246	23%	58,513	4%	36,624	2%	18,710	1%
08/16	36,611	2%	431,928	22%	74,062	4%	45,617	2%	24,578	1%
09/16	15,161	2%	167,501	18%	48,875	5%	27,317	3%	12,449	1%
<b>Total</b>	<b>\$ 222,420</b>	<b>2%</b>	<b>\$ 1,738,784</b>	<b>17%</b>	<b>\$ 554,358</b>	<b>6%</b>	<b>\$ 327,823</b>	<b>3%</b>	<b>\$ 163,303</b>	<b>2%</b>

Month of Collection	Zip Code									
	32535		32561		32562		32577		Total Month	% OF Total
	Century (Other) Area	% OF Total	Pensacola Beach Area	% OF Total	Other	% OF Total	Molino Area	% OF Total		
10/15	114	0%	344,156	48%	-	0%	50	0%	719,688	100%
11/15	-	0%	273,123	44%	-	0%	-	0%	625,801	100%
12/15	310	0%	150,864	37%	-	0%	-	0%	407,658	100%
01/16	83	0%	135,746	35%	-	0%	-	0%	384,174	100%
02/16	120	0%	112,686	30%	-	0%	-	0%	372,197	100%
03/16	124	0%	169,342	35%	-	0%	-	0%	489,969	100%
04/16	118	0%	371,503	44%	-	0%	-	0%	835,430	100%
05/16	122	0%	330,868	43%	-	0%	-	0%	773,474	100%
06/16	215	0%	487,471	47%	-	0%	-	0%	1,029,008	100%
07/16	215	0%	727,042	49%	-	0%	-	0%	1,478,722	100%
08/16	130	0%	967,791	50%	-	0%	-	0%	1,921,321	100%
09/16	121	0%	447,154	49%	-	0%	-	0%	917,462	100%
<b>Total</b>	<b>\$ 1,673</b>	<b>0%</b>	<b>\$ 4,517,745</b>	<b>45%</b>	<b>\$ -</b>	<b>0%</b>	<b>\$ 50</b>	<b>0%</b>	<b>\$ 9,954,904</b>	<b>100%</b>

**Tourist Development Tax Collection Data  
Reported in Fiscal Year Format  
Escambia County Florida**

<b>THREE (3%) PERCENT TOURIST TAX DOLLARS COLLECTED 2008-2017</b>											
Month Of Collection	For The Month Of	2008	2009	2010	2011	2012	2013	2014	2015	2016	2017
OCT	SEP	288,077	277,444	274,902	321,850	343,637	398,300	385,209	442,268	539,766	580,905
NOV	OCT	238,591	231,361	238,423	276,214	304,579	325,198	335,284	411,054	469,351	532,757
DEC	NOV	206,205	185,367	214,475	226,459	244,845	254,898	236,608	284,253	305,743	362,364
JAN	DEC	163,665	169,734	164,750	192,546	212,164	207,117	230,300	251,856	288,130	292,783
FEB	JAN	180,694	176,773	171,885	192,262	200,843	205,954	233,879	247,492	279,148	298,406
MAR	FEB	227,362	215,131	201,473	241,571	270,226	283,812	286,019	309,204	367,477	377,962
APR	MAR	344,151	297,195	330,261	397,690	464,002	518,242	510,758	550,693	626,572	646,982
MAY	APR	303,720	338,268	358,871	417,733	447,350	455,554	506,593	557,617	580,106	698,384
JUN	MAY	474,863	387,513	417,285	510,038	542,048	601,927	679,428	759,528	771,756	839,021
JUL	JUN	605,739	598,667	510,928	708,757	876,396	946,229	982,133	1,059,211	1,109,041	1,109,689
AUG	JUL	687,552	714,120	535,005	871,107	930,410	1,021,761	1,170,208	1,283,566	1,440,991	1,484,514
<b>TOTAL</b>		<b>\$3,720,618</b>	<b>\$3,591,573</b>	<b>\$3,418,258</b>	<b>\$4,356,228</b>	<b>\$4,836,500</b>	<b>\$5,218,992</b>	<b>\$5,556,420</b>	<b>\$6,156,741</b>	<b>\$6,778,081</b>	<b>\$7,223,768</b>



TOURIST DEVELOPMENT TAX COLLECTION DATA  
 REPORTED IN FISCAL YEAR FORMAT  
 ESCAMBIA COUNTY, FLORIDA

		<b>ADDITIONAL ONE (1%) PERCENT TOURIST TAX DOLLARS COLLECTED 2008-2017</b>									
Month Of Collection	For The Month Of	2008	2009	2010	2011	2012	2013	2014	2015	2016	2017
OCT	SEP	96,026	92,482	91,634	107,283	114,546	132,767	128,403	147,425	179,922	193,635
NOV	OCT	79,530	77,120	79,474	92,072	101,526	108,399	111,761	137,018	156,450	177,586
DEC	NOV	68,735	61,789	71,492	75,487	81,615	84,966	78,869	94,751	101,914	120,788
JAN	DEC	54,555	56,578	54,917	64,182	70,721	69,039	76,767	83,950	96,043	97,594
FEB	JAN	60,231	58,924	57,295	64,087	66,948	68,651	77,960	82,497	93,049	99,469
MAR	FEB	75,787	71,710	67,158	80,524	90,075	94,604	95,340	103,068	122,492	125,987
APR	MAR	114,717	99,065	110,087	132,563	154,667	172,747	170,253	183,564	208,857	215,661
MAY	APR	101,240	112,756	119,624	139,244	149,117	151,851	168,864	185,872	193,369	232,795
JUN	MAY	158,288	129,171	139,095	170,013	180,683	200,642	226,476	253,176	257,252	279,674
JUL	JUN	201,913	199,556	170,309	236,252	292,132	315,410	327,378	353,070	369,680	369,896
AUG	JUL	229,184	238,040	178,335	290,369	310,137	340,587	390,069	427,855	480,330	494,838
<b>TOTAL</b>		<b>\$1,240,206</b>	<b>\$1,197,191</b>	<b>\$1,139,419</b>	<b>\$1,452,076</b>	<b>\$1,612,167</b>	<b>\$1,739,664</b>	<b>\$1,852,140</b>	<b>\$2,052,247</b>	<b>\$2,259,361</b>	<b>\$2,407,923</b>